

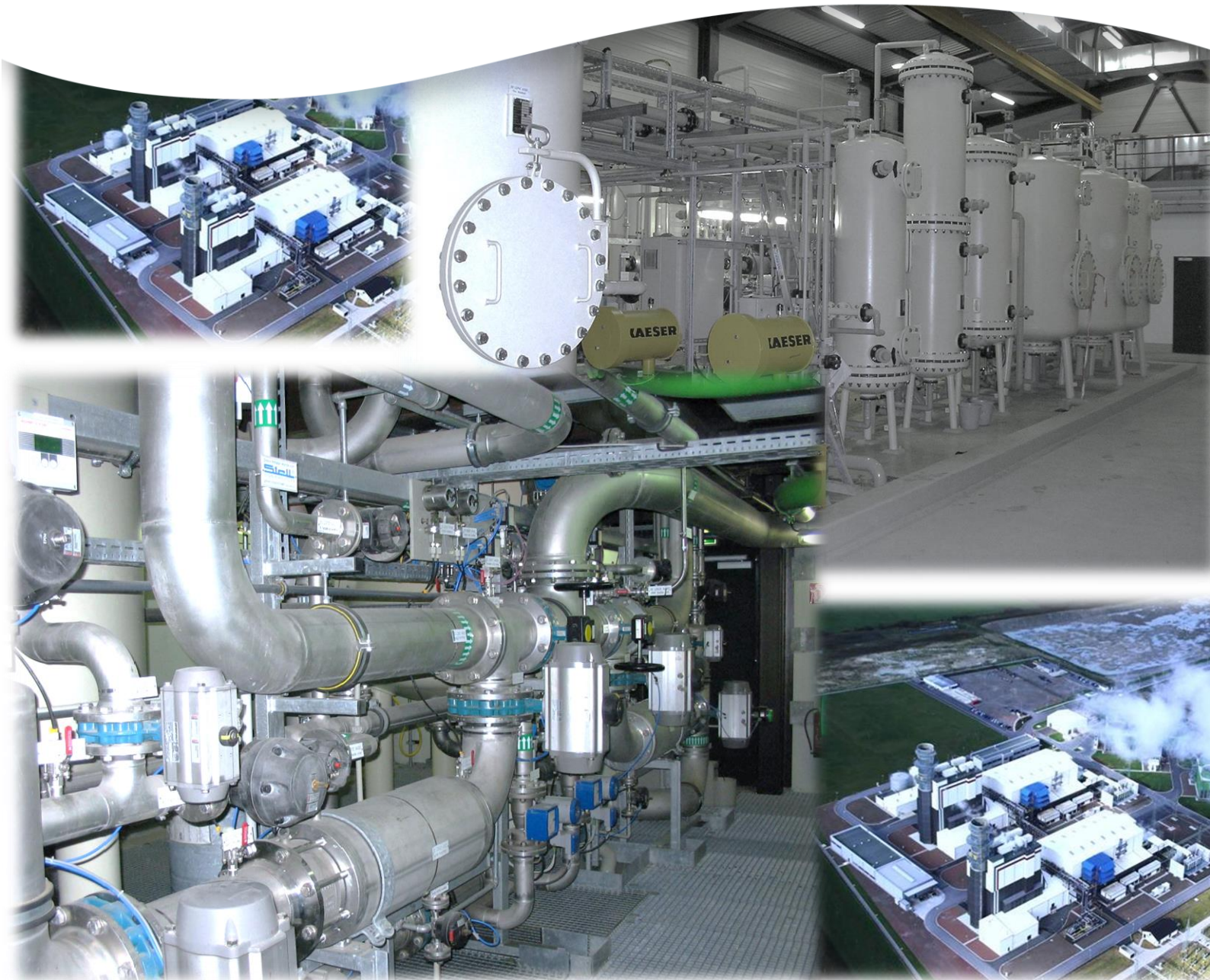
## REFERENCE LIST

SEMICONDUCTOR  
SOLAR  
PHARMA  
POWER GENERATION  
FOOD & BEVERAGE  
PULP AND PAPER  
CHEMICAL  
OIL AND GAS  
MINING  
AEROSPACE AND TRANSPORT



# Demineralisation & Condensate Polishing

## Treatment in Power Stations and Industrial Power Plants



Client	Plant Type	Capacity
OOO EvroChim-BMU Belorechensk/Russia 2013	<b>Demineralisation plant</b>  Cation and anion exchangers, CO <sub>2</sub> degassers, mixed bed exchangers, regeneration equipment	3 x 100 m <sup>3</sup> /h
Power plant Mainz-Wiesbaden Mainz/Germany 2013	<b>Demineralisation plant</b>  Deferrisation and demanganisation filters, cation and anion exchangers (UPCORE), CO <sub>2</sub> degassers, mixed bed exchangers, regeneration equipment	2 x 42 m <sup>3</sup> /h
Alstom Tzafit/Israel 2013	<b>Demineralisation plant</b>  Gravel filters, Activated carbon filters, cation and anion exchangers (UPCORE), CO <sub>2</sub> degassers, mixed bed exchangers, regeneration equipment, chemical storage tanks  <b>Waste water treatment</b>  Neutralisation	2 x 100 m <sup>3</sup> /h
Siemens Andong/Korea 2012	<b>Condensate treatment</b>  Cartridge filters, external regenerated mixed bed exchanger, regeneration equipment, chemical storage tanks	2 x 198 m <sup>3</sup> /h
Siemens Ansan/Korea 2012	<b>Condensate treatment</b>  Cartridge filters, external regenerated mixed bed exchanger, regeneration equipment, chemical storage tanks	2 x 345 m <sup>3</sup> /h
Alstom Power Rybnik/Poland  2011	<b>Condensate treatment</b>  Cartridge filters, cation and mixed bed exchangers, regeneration equipment, chemical storage tanks	2x 795 m <sup>3</sup> /h
Alstom Power Narva/Estonia 2011	<b>Pre-treatment</b>  Coagulation, flocculation, sedimentation, sandfilter, biofilter, backwashwater recycling and sludge dewatering unit  <b>Demineralisation plant</b>  Cation and anion exchangers (UPCORE), CO <sub>2</sub> degassers, mixed bed exchangers regeneration equipment, chemical storage tanks  <b>Waste water treatment</b>  Neutralisation	1 x 55 m <sup>3</sup> /h        2 x 36 m <sup>3</sup> /h

Client	Plant Type	Capacity
ThyssenKrupp Uhde EG-EHC 2011	<b>Pre treatment</b>	
	Coagulation, flocculation, sedimentation, sand filter	120 m <sup>3</sup> /h
	<b>Cooling tower make-up water treatment</b>	
	Reverse osmosis	120 m <sup>3</sup> /h
	<b>Demineralisation plant</b>	
	Reverse osmosis, mixed bed exchangers	14 m <sup>3</sup> /h
	<b>Waste water treatment - ZLD</b>	
	Reverse osmosis, crystalliser	28 m <sup>3</sup> /h
Siemens Hemweg/Netherlands	<b>Boiler blow down recycling unit</b> Balance tank, RO-EDI	2 x 8 m <sup>3</sup> /h
Ecolutia Gommiswald/Switzerland	<b>3 x Pretreatment – Container</b> Multimediafilter	150 m <sup>3</sup> /h
Siemens Toul/France	<b>Demineralisation plant</b> 2 stage RO system, membrane-degasification, EDI, dosing equipment	2 x 6 m <sup>3</sup> /h
KVA Bern/Switzerland	<b>Demineralisation plant</b> Softener, RO, dosing equipment, EDI	2 x 7.5 m <sup>3</sup> /h
Ecolutia Gommiswald/Switzerland	<b>4 x Pretreatment – Container</b> Multi-media filter	150 m <sup>3</sup> /h
	<b>3 x Brackish water RO – Container</b>	55 m <sup>3</sup> /h
Power Holding Co of Nigeria, Egbin Power Plant, Lagos/Nigeria	<b>Major refurbishment of existing power station</b>	300 m <sup>3</sup> /h
	<b>Raw water pretreatment plant</b> Chemical Dosing (Lime, Chlorine) Twin clarifiers Sand filtration Raw water & firefighting storage Carbon filtration & Potable water storage	
	<b>Demineralisation Plant</b> GAC filtration, cation, anion and mixed bed ion exchangers Regeneration stations Chemical Bulk storage & measuring systems	2 x 240 m <sup>3</sup> /h
Siemens AG Rotterdam/Netherlands	<b>Demineralisation plant</b> Gravel and activated carbon filtration, cation and anion exchangers, degasser, mixed bed exchangers, regeneration station, chemical storage, neutralisation	2 x 16 m <sup>3</sup> /h
Tractebel Brüssel/Belgium GDF Suez Wilhelmshafen	<b>Demineralisation plant</b> Cartridge filter, cation and anion exchangers, mixed bed exchangers, regeneration station, chemical storage	2 x 40 m <sup>3</sup> /h
	<b>Flue gas desulphurisation</b> Precipitation, flocculation, sedimentation (2 staged) sand filter, sludge dewatering, chemical storage	1 x 40 m <sup>3</sup> /h
	<b>Boiler feed water with OIS Belgium as consortium partner</b>	

Client	Plant Type	Capacity
Perlen Papier AG Perlen/Switzerland	<b>Demineralisation</b> cation exchanger scavenger anion exchanger mixed bed exchanger	2 x 40 m <sup>3</sup> /h 1 x 40 m <sup>3</sup> /h 2 x 40 m <sup>3</sup> /h 1 x 60 m <sup>3</sup> /h
Alstom Power Plants RWE npower, Pembroke UK	<b>Demineralisation</b> Raw Water storage & back-washable filters Ultrafiltration with CIP system RO pre-filters Double Pass RO units with CIP system Permeate storage & pumping Mixed bed exchangers Bulk storage & dilution systems for 96% H <sub>2</sub> SO <sub>4</sub> & 32% NaOH Neutralisation system	2 x 86 m <sup>3</sup> /h 2 x 84 m <sup>3</sup> /h 2 x 60 m <sup>3</sup> /h
Mondi Syktyvkar/Russia	<b>Condensate polishing plant</b> Cartridge filter, mixed bed exchanger, regeneration station, Condensate storage tank	3 x 400 m <sup>3</sup> /h
E.On Maasflakte/Netherlands	<b>Demineralisation</b> Gravel and activated carbon filtration, RO, mixed bed, chemical storage  <b>Condensate polishing plant</b> Cartridge filter, cation exchanger, mixed bed exchanger, neutralisation, dosing equipment	2 x 70 m <sup>3</sup> /h 2 x 650 m <sup>3</sup> /h
Siemens AG Lünen Germany	<b>Cooling tower make-up water</b> FLOCOPAC LC <b>Demineralisation</b> Gravel and activated carbon filtration, cation and anion exchanger, TOC - RO, mixed bed, chemical storage <b>Condensate polishing plant</b> Cartridge filter, cation exchanger, mixed bed exchanger, neutralisation	2 x 750 m <sup>3</sup> /h 2 x 25 m <sup>3</sup> /h 2 x 713 m <sup>3</sup> /h
KAB Takuma GmbH HKW Eisenhüttenstadt Germany	<b>Cooling tower make-up water</b> Gravel filter, dosing equipment <b>Demineralisation</b> Scavenger, cation and anion exchanger, TOC - RO, mixed bed exchanger, chemical storage <b>Condensate polishing plant</b> Activated carbon filter, cation exchanger, mixed bed exchanger, neutralisation, dosing equipment	300 m <sup>3</sup> /h 45 m <sup>3</sup> /h 180 m <sup>3</sup> /h
Alstom Power Systems GmbH RDK8 Karlsruhe Germany	<b>Condensate polishing plant</b> Cartridge filter, cation exchanger, mixed bed exchanger	2 x 752 m <sup>3</sup> /h
RWE Westfalen Germany	<b>Cooling tower make-up water</b> Flocculation, decarbonisation, sedimentation, Clarification reactor FLOCOPAC LC sludge treatment with band-pass filter	2 x 1,360 m <sup>3</sup> /h
E.ON Datteln Germany	<b>Demineralisation</b> Gravel and activated carbon filtration, cation and anion exchanger, TOC - RO, mixed bed, chemical storage <b>Condensate polishing plant</b> Cartridge filter, cation exchanger, mixed bed exchanger, neutralisation	2 x 85 m <sup>3</sup> /h 2 x 650 m <sup>3</sup> /h
Siemens PG Pont sur Sambre France	<b>Cooling tower</b> Biofiltration, denitrification, carbon removal, final filtration, belt thickener for rinsing waste water Biofit-FDN, BIOFIT FC	70 m <sup>3</sup> /h

Client	Plant Type	Capacity
RWE AG Niederaußem Germany	<b>Cooling tower make-up water</b> Flocculation, decarbonisation, sedimentation, Clarification reactor FLOCOPAC LC	4 x 4,000 m <sup>3</sup> /h
Vattenfall Cottbus Boxberg/Germany	<b>WWTP</b> Sand trap, flocculation, neutralisation, pre-settlement	700 m <sup>3</sup> /h
Siemens PG Pont sur Sambre CCPP France	<b>Cooling tower make-up water</b> Flocculation, decarbonisation, sedimentation, Clarification reactor FLOCOPAC LC <b>Production of boiler feed water (Demineralisation)</b> Gravel filter, activated carbon filter, cation exchanger, degasser, anion exchanger, mixed bed exchanger	2 x 240 m <sup>3</sup> /h 2 x 8 m <sup>3</sup> /h
Via Hitachi Oberhausen for Steag Walsum/Germany	<b>FGD effluent treatment</b>	84 m <sup>3</sup> /h
Alstom Power Spain S.A. Malaga Spain	<b>Production of boiler feed water from municipal water after sewage treatment.</b> Precipitation, flocculation, ultrafiltration, activated carbon filters, reverse osmosis 1+2, mixed bed, neutralisation	2 x 27.5 m <sup>3</sup> /h
Alstom Power Generation AG Maritza/Bulgaria	<b>Cooling tower make-up water</b> (River water treatment) Flocculation, decarbonisation, sedimentation, Clarification reactor FLOCOPAC L <b>Boiler feed water (demineralisation)</b> Gravel filter, activated carbon filter, cation exchanger, and degasser, anion exchanger, mixed bed exchanger.	2 x 1,100 m <sup>3</sup> /h 2 x 42 m <sup>3</sup> /h
Alstom Power Italia S. p. a. Gissi/Italy	<b>Production of boiler feed water from municipal water after sewage treatment. Zero discharge plant</b> Precipitation, flocculation, ultrafiltration, activated carbon, reverse osmosis, mixed bed, evaporator, neutralisation	2 x 25 m <sup>3</sup> /h
Eon Engineering GmbH Scholven/Germany	<b>Treatment of wastewater resulting from flue gas desulphurisation</b> Extension by mercury removal Refitting during normal operation	
Siemens Power Generation Hamm Uentrop/Germany	<b>Cooling tower make-up water</b> (River water treatment) Flocculation, decarbonisation, sedimentation, Clarification reactor FLOCOPAC L <b>Boiler feed water (demineralisation)</b> Gravel filter, activated carbon filter, cation exchanger, degasser, anion exchanger, mixed bed exchanger. <b>Condensate Polishing</b> Cartridge Filter (backwash), external regenerated mixed bed exchanger	2 x 500 m <sup>3</sup> /h 2 x 16 m <sup>3</sup> /h 2 x 195 m <sup>3</sup> /h
RWE AG Essen/Germany KW Niederaußem	<b>Automation of the demin plant</b> Optimization of the process water plant in Block BoA 1. The demineralisation plant with a capacity of is being upgraded, extended by a regeneration station and automated.	2 x 220 m <sup>3</sup> /h
E.On Engineering GmbH Datteln/Germany	<b>Treatment of wastewater resulting from flue gas desulphurisation</b> Extension by mercury removal Refitting during normal operation	
Siemens PG Ras Laffan Qatar	<b>Boiler feed water (demineralisation)</b> Mixed bed after evaporation	2 x 90 m <sup>3</sup> /h

Client	Plant Type	Capacity
Petrom SA Pitesti/Romania	<b>Treatment of process condensate</b> Cation exchanger, degasser, mixed bed	2 x 15 m <sup>3</sup> /h
	<b>Demineralisation plant</b> Gravel filter, cation and anion exchanger, mixed bed	2 x 55 m <sup>3</sup> /h
Minera Escondida Ltda. Via Aguasin Lt.a Chile	<b>River water treatment</b> Flocculation, decarbonisation, sedimentation, Clarification reactor FLOCOPAC-I	1 x 350 m <sup>3</sup> /h
	Reverse osmosis	2 x 80 m <sup>3</sup> /h
Mark-E AG Herdeke/Germany	<b>Refurbishment and optimisation of the demineralisation plant and the condensate polishing plant.</b>	
Eon Engineering GmbH Schkopau/Germany	<b>Treatment of wastewater resulting from flue gas desulphurisation</b> Extension of capacity Refitting and extension largely including existing components during normal plant operation.	25 m <sup>3</sup> /h
Südzucker Bioethanol GmbH ZeitZ/Germany	<b>Boiler feed water</b> Gravel filter, decarbonisation, reverse osmosis, degasser, mixed bed.	2 x 40 m <sup>3</sup> /h
	<b>Process water treatment</b> Ultrafiltration, reverse osmosis.	2 x 50 m <sup>3</sup> /h
	<b>Anaerobic-aerobic waste water treatment</b> ANAFIT-FB / BIOFIT-H / FILTRO-B	235 m <sup>3</sup> /h 11.1 t BOD/d
Formosa Petrochemie Corporation Taiwan	<b>Condensate Polishing</b>  PW Mixed bed	2 x 300 m <sup>3</sup> /h
Nan Ya Plastic Corp.  Taiwan	<b>River water treatment</b> Flocculation, Sedimentation System FLOCOPAC-L	1 x 5,000 m <sup>3</sup> /h
	Sand filtration System FILTRO-G	1 x 1,250 m <sup>3</sup> /h
Uhde GmbH, Dortmund For Saudi Arabia Fertiliser Company	<b>Treatment of condensate cartridge filter:</b> Cartridge filter, mixed bed exchanger	3 x 400 m <sup>3</sup> /h
	<b>Treatment of Deionate (desalination):</b> Activated carbon filter, cation exchanger, trickling degasser, anion exchanger	2 x 300 m <sup>3</sup> /h
Infraserv Gendorf Burgkirchen/Germany	<b>Demineralisation:</b> Cation exchanger, anion exchanger	2 x 180 m <sup>3</sup> /h
Siemens PG Madrid For Gas Natural in Arrubal/Spain	<b>Cooling tower make-up water</b> (River water and sludge treatment) Flocculation, Clarification reactor FLOCOPAC-L	2 x 815 m <sup>3</sup> /h
	<b>Treatment of Deionate:</b> Sand filter, activated carbon filter, cation exchanger, irrigator, degasser, anion exchanger, mixed bed filter	1 x 130 m <sup>3</sup> /h
NBCC Choibalsan/Mongolia	<b>Boiler feed water treatment:</b> Softener Reverse osmosis NOVALIS	50 m <sup>3</sup> /h
Uhde GmbH, Dortmund  For Qatar Fertiliser Company	<b>Treatment of Turbine condensate:</b> Cartridge filter, mixed bed filter	2 x 350 m <sup>3</sup> /h
	<b>Treatment of Process condensate:</b> Cartridge filter, cation exchanger, anion exchanger, mixed bed filter	2 x 170 m <sup>3</sup> /h
	<b>Treatment for Demin Water:</b> Activated carbon filter, cation exchanger, anion exchanger	2 x 110 m <sup>3</sup> /h

Client	Plant Type	Capacity
Kuo Kuang Power Company Taiwan Through Siemens AG Power Generation Erlangen/Germany	<b>Make-up water treatment:</b> Demineralisation <b>Condensate treatment:</b> Cartridge filter <b>Wastewater treatment:</b> Neutralisation, flocculation, precipitation, sludge treatment	20 m <sup>3</sup> /h 235 m <sup>3</sup> /h 15 m <sup>3</sup> /h
Power Station RUS-Nowoworonesh through KAB- AG Berlin/Germany	<b>Pre-treatment:</b> Destabilisation, flocculation and precipitation, FLOCOPAC-L <b>Demineralisation:</b> Weakly and strongly acid cation exchanger, weakly basic anion exchanger, CO <sub>2</sub> trickling degasser, strongly basic anion exchanger  Mixed bed exchanger as polishing stage	200 m <sup>3</sup> /h 3 x 100 m <sup>3</sup> /h
Siemens Ltd. Huntstown/Republic of Ireland	<b>Make-up water treatment:</b> Gravel filter, activated carbon filter, trickling degasser, 2-stage reverse osmosis, CONTIPUR (CEDI), dosing plant	2 x 10 m <sup>3</sup> /h
Formosa Plastic Taiwan	<b>Extension River water treatment</b> Flocculation, Sedimentation System FLOCOPAC-L	2 x 3,000 m <sup>3</sup> /h
Stadtwerke Rosenheim Rosenheim/Germany	<b>Boiler feed water treatment:</b> Reverse osmosis, EDI	10 m <sup>3</sup> /h
Starck Goslar/Germany	<b>Treatment of ultrapure working materials:</b> Softener, Reverse osmosis, EDI	3.4 m <sup>3</sup> /h
Zuckerfabrik Jülich/Germany	<b>Boiler feed water treatment:</b> Demineralisation, CO <sub>2</sub> removal, mixed bed exchanger Neutralisation and chemical storage	2 x 25 m <sup>3</sup> /h
HEW Hamburg/Germany	<b>Demineralisation plant for make-up water:</b> FLOCOPAC-L, multimedia filter, activated carbon filter, two-line demineralisation plant, cation and anion exchanger, mixed bed exchanger	2 x 120 m <sup>3</sup> /h
Hamberger Industrierwerke Stephanskirchen Germany	<b>Pure water for a high-pressure boiler (parquet production):</b> Softener ECOSOFT, reverse osmosis NOVALIS, membrane degasification, ContiPur (CEDI), tank	4.5 m <sup>3</sup> /h
Degrémont Santillo/Mexico	<b>EDI plant for an EDF power generation station in Mexico:</b> ContiPur (CEDI) comprising 4 stacks	11.4 m <sup>3</sup> /h
Borsodchem Kazincbarcika/Hungary	<b>Extension of an already existing boiler feed water treatment plant:</b> Cation exchanger, trickling degasser, reverse osmosis, mixed bed exchanger	2 x 122.5 m <sup>3</sup> /h
HEW Hamburg/Germany	<b>Boiler feed water treatment:</b> FLOCOPAC-L Multimedia filter Activated carbon filter Demineralisation plant  <b>Condensate treatment:</b> Mixed bed exchanger	140 m <sup>3</sup> /h 3 x 60 m <sup>3</sup> /h 2 x 100 m <sup>3</sup> /h 2 x 120 m <sup>3</sup> /h 60 m <sup>3</sup> /h
RWE Niederaußem Germany	<b>Condensate treatment:</b> Cartridge filter and mixed bed exchanger	2 x 925 m <sup>3</sup> /h



Client	Plant Type	Capacity
Linde München/Germany	<b>Boiler feed water treatment</b> Demineralisation	1.5 m <sup>3</sup> /h
Katharinenhospital Stuttgart/Germany	<b>Boiler feed water treatment</b> Reverse osmosis NOVALIS	2.4 m <sup>3</sup> /h
Formosa Petrochemical Corp. RC-Mai-Lao	Demineralisation Cation/anion exchanger	8 x 500 m <sup>3</sup> /h
Chemopetrol a.s. Litvinov/ Czech Republic	Cooling tower make-up water Demineralisation Plant Softening	2 x 375 m <sup>3</sup> /h 3 x 275 m <sup>3</sup> /h 2 x 150 m <sup>3</sup> /h
VEAG AG Berlin KW Lippendorf Berlin/Germany	<b>Cooling tower make-up water treatment:</b> Cooling tower make-up water Wastewater treatment plant	2 x 2,400 m <sup>3</sup> /h 2 x 200 m <sup>3</sup> /h
Erhard Schwäbisch Gmünd/Germany	<b>Boiler feed water treatment:</b> Softening, reverse osmosis NOVALIS	3.5 m <sup>3</sup> /h
Schering Berlin/Germany	<b>Boiler feed water treatment:</b> Automation of an already existing partial treatment	15 m <sup>3</sup> /h
Schrader Ennigerloh Magdeburg/Germany	<b>Boiler feed water treatment:</b> Decarbonisation and softening	2 x 20 m <sup>3</sup> /h
WAG Wien/Austria	<b>Boiler feed water treatment:</b> Demineralisation - compound fluidised bed ion exchanger	50 m <sup>3</sup> /h
Stadtwerke Cottbus HKW Cottbus through ABB Mannheim Mannheim/Germany	Cooling tower make-up water Demineralisation plant Condensate polishing plant Condensate polishing plant	2 x 125 m <sup>3</sup> /h 2 x 50 m <sup>3</sup> /h 2 x 83 m <sup>3</sup> /h 2 x 71 m <sup>3</sup> /h
Mass Aritma Gebze-Kocaeli/Turkey	<b>Boiler feed water treatment:</b> Pre-filtration, fluidised bed ion exchanger (cation, anion, mixed bed exchanger)	25 m <sup>3</sup> /h
VEAG AG Berlin KW Boxberg Berlin/Germany	<b>Cooling tower make-up water treatment</b>	2 x 3,400 m <sup>3</sup> /h
Papierfabrik Palm Aalen/Germany for fab in Eltmann	<b>Boiler feed water treatment:</b> Filter for removal of manganese, desalination	14 m <sup>3</sup> /h
Wupperversand Wuppertal/Germany	<b>Treatment of wastewater resulting from flue gas scrubbing:</b> Pre-filter, heat exchanger, collecting station, two-stage neutralisation, precipitation/flocculation (Hg), sludge treatment, multi-media filter, chemical station	5 m <sup>3</sup> /h
BorsodChem Co. Ltd. Kazincbarcika/Hungary	<b>Boiler feed water treatment:</b> Softener, trickling degasser, reverse osmosis, permeate tank, mixed bed exchanger, DI water tank	450 m <sup>3</sup> /h
Formosa Petrochemical Corp. Taiwan	<b>Cooling tower make-up water treatment:</b> Cooling tower make-up water Decarbonisation Demineralisation plant	4 x 4,000 m <sup>3</sup> /h 8 x 500 m <sup>3</sup> /h 8 x 500 m <sup>3</sup> /h
EKO Eisenhüttenstadt through ELIN Berlin/Germany	<b>Demineralisation:</b> Gravel filter, cation exchanger, trickling degasser and anion exchanger	2 x 90 m <sup>3</sup> /h



Client	Plant Type	Capacity
TRV Buschhaus	<b>Condensate polishing:</b> Cation exchanger and mixed bed exchanger	150 m <sup>3</sup> /h
Boehringer Ingelheim/Germany	<b>Demineralisation:</b> Antiscalant dosing and reverse osmosis plant	2 x 50 m <sup>3</sup> /h
Unkel Würzburg/Germany	<b>Demineralisation:</b> Decarbonisation Reverse osmosis plant	30 m <sup>3</sup> /h 12 m <sup>3</sup> /h
Neckarwerke AG Power Station Gaisburg Stuttgart/Germany	Demineralisation Condensate polishing Turbine condensate polishing Condensate polishing from a remote heating facility	2 x 50 m <sup>3</sup> /h 3 x 100 m <sup>3</sup> /h 300 m <sup>3</sup> /h 100 m <sup>3</sup> /h
Felix Schoeller Weissenborn/Germany	<b>Demineralisation:</b> Cation-, anion- and mixed bed exchangers <b>Condensate polishing:</b> Cation- and mixed bed exchangers	2 x 15 m <sup>3</sup> /h 1 x 40 m <sup>3</sup> /h
STEAG AG Essen/Germany Leuna 2.000	<b>Cooling tower make-up water treatment:</b> Cooling tower make-up water Flocculation and sedimentation Filtration Reverse osmosis	2,000 m <sup>3</sup> /h 780 m <sup>3</sup> /h
VITKOVICE A.S. Ostrava/Czech Republic	Demineralisation	2 x 90 m <sup>3</sup> /h
ROW Rheinische Olefinwerke GmbH Wesseling/Germany	<b>Treatment of wastewater resulting from flue gas desulphurisation</b>	5 m <sup>3</sup> /h
Formosa Plastic Taiwan	<b>River water treatment</b> FLOCOPAC-L	4 x 3,000 m <sup>3</sup> /h
Kernkraftwerk Obrigheim Obrigheim/Germany	<b>Demineralisation</b> Mixed bed exchanger Mixed bed exchanger Reconstruction of neutralisation	2 x 40 m <sup>3</sup> /h 60 m <sup>3</sup> /h
Neckarwerke AG Altbach Power Station Esslingen/Germany	<b>Demineralisation:</b> Flocopac, gravel filter and H decarbonisation, Reverse osmosis plant and fluidised bed ion exchanger <b>Condensate polishing:</b> Pre-coat filter, cation exchanger and mixed bed exchanger	30 m <sup>3</sup> /h Ext. to 60 m <sup>3</sup> /h 730 m <sup>3</sup> /h
Neckarwerke Altbach Power Station Esslingen/Germany	<b>Cooling tower make-up water treatment:</b> Cooling tower make-up water Ash water treatment plant Flue gas desulphurisation wastewater treatment plant	2 x 600 m <sup>3</sup> /h 130 m <sup>3</sup> /h 15 m <sup>3</sup> /h
BEWAG Berlin Kraftwerk Oberhavel Berlin/Germany	<b>Treatment of wastewater resulting from flue gas desulphurisation</b>	6.5 m <sup>3</sup> /h
Hoechst Trevira GmbH Bobingen/Germany	<b>Demineralisation:</b> Reverse osmosis plant  <b>Condensate polishing:</b> Cation-, anion- and mixed bed exchangers	3 x 17.5 m <sup>3</sup> /h  3 x 35 m <sup>3</sup> /h
Bayernwerk AG Munich Frauenaurach/Germany	<b>Treatment of wastewater resulting from flue gas desulphurisation</b> Demineralisation	16.5 m <sup>3</sup> /h 150 m <sup>3</sup> /h
Burda Offenburg/Germany	Demineralisation Continuous neutralisation	18 m <sup>3</sup> /h 13 m <sup>3</sup> /h

Client	Plant Type	Capacity
Michelin Reifenwerke KGaA Bad Kreuznach Germany	<b>Demineralisation:</b> Compound cation exchanger, CO <sub>2</sub> trickling degasser, compound anion exchanger	25 m <sup>3</sup> /h
Müllverbrennungsanlage der GSB Ebenhausen (Sewage incineration plant) through GHH Borsig	<b>Demineralisation:</b> Compound cation exchanger SERVO-Cleanflow, CO <sub>2</sub> trickling degasser, compound anion exchanger, thermal degasification	8/21 m <sup>3</sup> /h
Bayernwerk AG Munich Schwandorf Power Station Germany	<b>Wastewater treatment</b>	80 m <sup>3</sup> /h
Gas Turbine Power Station T-Map Ta Phut  through GEC Alstom Belfort/France	<b>Pre-treatment:</b> Destabilisation, flocculation and precipitation for treating reservoir water <b>Demineralisation:</b> Gravel filter, activated carbon filter strongly acid cation exchanger, CO <sub>2</sub> trickling degasser, strongly basic anion exchanger  Mixed bed exchanger as polishing stage	3 x 300 m <sup>3</sup> /h  2 x 140 m <sup>3</sup> /h
SP-Reifenwerke GmbH Dunlop Hanau/Germany	<b>Treatment of re-circulation cooling water:</b>  Removal of iron and manganese, H decarbonisation with trickling degasser	2 x 100 m <sup>3</sup> /h
GKM Mannheim/Germany	<b>Condensate polishing</b>	2 x 750 m <sup>3</sup> /h
Bayernwerk AG Ingolstadt/Germany	<b>Treatment of wastewater resulting from flue gas scrubbing:</b> Treatment plant for fuel power station, block III (Same design as the treatment plant commissioned in 1990 for block IV)	10 m <sup>3</sup> /h
Belchatov Poland through ESTS Netherlands	<b>Treatment of wastewater resulting from flue gas desulphurisation</b>	20 m <sup>3</sup> /h
Heizkraftwerk SSK Guben through RWE Essen Germany	<b>Industrial water treatment</b>	110 m <sup>3</sup> /h
Stadtwerke Leipzig AG Leipzig/Germany	<b>Demineralisation:</b> Multi-media filter, compound cation exchanger, trickling degasser, compound anion exchanger  <b>Condensate polishing:</b> Cartridge filter, fluidised bed cation exchanger and mixed bed exchanger	17 m <sup>3</sup> /h  190 m <sup>3</sup> /h
BASF Ludwigshafen Schwarzeide Germany	<b>Treatment of wastewater resulting from flue gas desulphurisation</b>	8 m <sup>3</sup> /h
GKM Mannheim/Germany	<b>Make-up water treatment:</b> - Cont. ECI as carboxyl phase - 2-stage reverse osmosis plant - Vacuum degasification	2 x 75 m <sup>3</sup> /h

Client	Plant Type	Capacity
Papierfabrik Scheufelen GmbH Lenningen Germany	<b>Demineralisation:</b> Cation exchanger, CO <sub>2</sub> trickling degasser, anion exchanger  <b>Condensate polishing:</b> Activated carbon filter, cation exchanger, mixed bed exchanger	2 x 25 m <sup>3</sup> /h  100 m <sup>3</sup> /h
MVA Nürnberg Nürnberg Germany	<b>Treatment of wastewater resulting from a sewage incineration plant:</b> Precipitation, flocculation and sedimentation, contact sludge reactor, Floccopac, post-filtration and sludge dewatering via filter press	5 - 40 m <sup>3</sup> /h
Stadtwerke Leipzig AG Leipzig/Germany	<b>Demineralisation:</b> Weakly acid cation exchanger, trickling degasser and reverse osmosis plant <b>Condensate polishing:</b> Cation-, anion- and mixed bed exchangers	194 m <sup>3</sup> /h  166 m <sup>3</sup> /h
Neckarwerke AG KW Altbach Esslingen/Germany	<b>Treatment of wastewater resulting from flue gas desulphurisation (2<sup>nd</sup> stage)</b>	18 m <sup>3</sup> /h
PreussenElektra KW Staudinger	<b>Decarbonisation</b> FLOCCOPAC-L	1,100 m <sup>3</sup> /h
HKW Erfurt Ost through ENAG, Erfurt, Germany	Demineralisation Condensate polishing	100 m <sup>3</sup> /h 100 m <sup>3</sup> /h
Röhm GmbH Darmstadt/Germany	<b>Demineralisation:</b> Well water treatment with removal of iron and manganese, cation exchanger, CO <sub>2</sub> trickling degasser  <b>Condensate polishing:</b> Anion- and mixed bed exchangers	120 m <sup>3</sup> /h  80 m <sup>3</sup> /h
Gebrüder Lang GmbH Ettringen/Germany	<b>Demineralisation:</b> Multimedia filter, cation exchanger, CO <sub>2</sub> trickling degasser, anion exchanger, mixed bed exchanger	25 m <sup>3</sup> /h
GKM Mannheim/Germany	<b>Treatment of wastewater resulting from flue gas desulphurisation:</b> Extension of an already existing system	2,000 m <sup>3</sup> /h
PreussenElektra KW Rostock	<b>Cooling tower make-up water treatment:</b>	2,000 m <sup>3</sup> /h
Agfa-Gevart AG Leverkusen Germany	<b>Demineralisation of photographic emulsion water:</b> Pre-heating, decarbonisation, reverse osmosis plant, mixed bed exchanger	40 m <sup>3</sup> /h
Hoffmann La Roche Grenzach Grenzach/Germany	<b>Make-up water treatment:</b> Demineralisation (+ Multistep) (Fluidised bed ion exchanger)	2 x 150 m <sup>3</sup> /h
PreussenElektra KW Emden	<b>Central process wastewater treatment</b>	10 m <sup>3</sup> /h
GKM Mannheim/Germany Fab II	<b>Central process wastewater treatment</b>	80 m <sup>3</sup> /h

Client	Plant Type	Capacity
Stadtwerke München Power Station Nord Munich/Germany	<b>Demineralisation:</b> Compound cation exchanger SERVO-Cleanflow, CO <sub>2</sub> trickling degasser, strongly basic anion exchanger, vacuum degasser	3 x 100 m <sup>3</sup> /h
Stadtwerke München Power Station Nord Munich/Germany	<b>Heating water treatment:</b> Pre-filter, strongly acid cation exchanger SERVO-Cleanflow, strongly basic anion exchanger, vacuum degasser	100 m <sup>3</sup> /h
Stadtwerke München Power Station Nord Munich/Germany	<b>Condensate polishing:</b> Pre-filter, cation exchanger SERVO-Cleanflow, externally regenerated mixed bed exchanger, separate back-rinsing/separation/regeneration column for cation exchanger, regeneration station, neutralisation	3 x 600 m <sup>3</sup> /h
Stadtwerke Bremen KW Hafen Germany	<b>Treatment of wastewater resulting from flue gas desulphurisation</b> Flue gas desulphurisation wastewater treatment plant with NH <sub>3</sub> stripping Process wastewater treatment	10 m <sup>3</sup> /h 100 m <sup>3</sup> /h
Bayernwerk AG Ingolstadt Germany	<b>Treatment of wastewater resulting from flue gas scrubbing in a fuel power station, block IV:</b> Two-stage precipitation, flocculation, neutralisation and sedimentation plant + NH <sub>3</sub> stripping, ammonia steam stripping, sludge dehydration	10 m <sup>3</sup> /h
Holtzmann E & Cie. GmbH Fab Maxau Karlsruhe/Germany	<b>Demineralisation:</b> Multi-media filter, cation exchanger, CO <sub>2</sub> trickling degasser, compound anion exchanger, mixed bed exchanger	2 x 34 m <sup>3</sup> /h
Stadtwerke Bremen HKW Hastedt Germany	<b>Treatment of wastewater resulting from flue gas desulphurisation</b> Flue gas desulphurisation wastewater treatment plant with NH <sub>3</sub> stripping Process wastewater treatment	10 m <sup>3</sup> /h 70 m <sup>3</sup> /h
Isar-Amper-Werke München Leininger Werk Block 5 Germany	<b>Treatment of wastewater resulting from flue gas desulphurisation:</b> Flue gas desulphurisation wastewater treatment plant with NH <sub>3</sub> stripping Luvo-wash water	21.6 m <sup>3</sup> /h 1.8 m <sup>3</sup> /h
Hoechst AG (Infraserv) Frankfurt/M. Germany	<b>Demineralisation:</b> weakly acid cation exchanger, reverse osmosis plant, multistep system, SERVO PC monitoring system	300 m <sup>3</sup> /h
BASF AG Ludwigshafen Ludwigshafen Germany	<b>Treatment of wastewater resulting from flue gas desulphurisation</b> Two-line process Sludge dewatering	2 x 15 m <sup>3</sup> /h
GKM Mannheim/Germany Fab I	<b>Central process wastewater treatment</b>	80 m <sup>3</sup> /h
Deutsche Gasrußwerke GmbH & Co.KG. Dortmund/Germany	<b>Demineralisation:</b> Multi-media filter, cation exchanger, CO <sub>2</sub> trickling degasser, anion- and cation exchangers <b>Condensate polishing:</b> Mixed bed exchanger	20 m <sup>3</sup> /h 100 m <sup>3</sup> /h

Client	Plant Type	Capacity
STEAG AG Essen Herne/Germany	<b>Treatment of wastewater resulting from flue gas desulphurisation:</b> Two-stage flue gas desulphurisation wastewater treatment plant, sludge dewatering	90 m <sup>3</sup> /h
Schoeller + Hoesch GmbH Gernsbach/Germany	<b>Demineralisation:</b> SERVO-Cleanflow	3 x 250 m <sup>3</sup> /h
STEAG AG Essen Walsum/Germany	<b>Treatment of wastewater resulting from flue gas desulphurisation</b> Two-stage flue gas desulphurisation wastewater treatment plant, sludge dewatering	90 m <sup>3</sup> /h
STEAG AG Essen Lünen/Germany	<b>Treatment of wastewater resulting from flue gas desulphurisation</b> Two-stage flue gas desulphurisation wastewater treatment plant, sludge dewatering	90 m <sup>3</sup> /h
Dillinger Hüttenwerke AG Dillingen/Germany	<b>Demineralisation I:</b> Fluidised bed cation and anion exchangers and mixed bed exchanger	55 m <sup>3</sup> /h
Dillinger Hüttenwerke AG Dillingen/Germany	<b>Demineralisation II:</b> Fluidised bed cation and anion exchangers and mixed bed exchanger	55 m <sup>3</sup> /h
Elektromark Hagen Werdohl-Elverlingsen/Germany	<b>Treatment of wastewater resulting from flue gas desulphurisation</b>	34 m <sup>3</sup> /h
PreussenElektra Hannover KW Staudinger (e on) Germany	<b>Treatment of wastewater resulting from flue gas desulphurisation</b>	50 m <sup>3</sup> /h
Technische Werke Stuttgart AG Stuttgart (EnBW) Germany	<b>Water treatment:</b> Total water treatment: River waste water-treatment	75 m <sup>3</sup> /h 100 m <sup>3</sup> /h
KRC Würzburg Mannheim/Germany	<b>Treatment of wastewater resulting from flue gas desulphurisation</b> Flue gas desulphurisation wastewater treatment plant with NH <sub>3</sub> stripping	20 m <sup>3</sup> /h
BEWAG AG Power Station Reuter West Berlin/Germany	<b>Demineralisation:</b> Fluidised bed cation and anion exchangers and mixed bed exchangers <b>Heating water treatment:</b> Softening <b>Condensate polishing:</b> Mixed bed cation exchanger	2 x 45 m <sup>3</sup> /h 3 x 110 m <sup>3</sup> /h 2 x 350 m <sup>3</sup> /h
BEWAG Berlin HKW Reuter Alt Germany	<b>Treatment of wastewater resulting from flue gas desulphurisation</b>	10 m <sup>3</sup> /h
BEWAG Berlin HKW Reuter/Germany	<b>Treatment of water resulting from wet ash removal</b>	2 x 135 m <sup>3</sup> /h
STEAG AG Essen KW Herne Germany	<b>Treatment of wastewater resulting from flue gas desulphurisation</b>	60 m <sup>3</sup> /h
Saarbergwerke AG Saarbrücken Fenne/Germany	<b>Treatment of wastewater resulting from flue gas desulphurisation</b> incl. biological reduction of formic acid	42 m <sup>3</sup> /h

Client	Plant Type	Capacity
Hoffmann La Roche Grenzach Grenzach/Germany	<b>Make-up water treatment:</b> Demineralisation (+ Liftbed) (Fluidised bed ion exchanger)	2 x 100 m <sup>3</sup> /h
Gemeinschaftskernkraftwerk Neckar GmbH (GKN) Neckarwestheim/Germany Block 2	<b>Cooling tower make-up water treatment:</b> Cooling tower make-up water (FLOCOPAC-L, sludge dewatering)	3 x 1,560 m <sup>3</sup> /h
Großkraftwerk Franken AG Erlangen/Germany	<b>River water treatment</b>	130 m <sup>3</sup> /h
Saarbergwerke AG Saarbrücken Bexbach/Germany	<b>Treatment of wastewater resulting from flue gas desulphurisation</b> incl. biological reduction of formic acid	53 m <sup>3</sup> /h
Oberösterreichische Kraftwerk AG Linz Riedersbach/Austria	<b>Treatment of wastewater resulting from flue gas desulphurisation</b>	15 m <sup>3</sup> /h
BEWAG Berlin HKW Reuter-West Germany	<b>Cooling tower make-up water treatment:</b> RPS and Sludge dewatering	2 x 1,100 m <sup>3</sup> /h
BEWAG Berlin HKW Rudow	<b>Treatment of water resulting from wet ash removal</b>	2 x 58 m <sup>3</sup> /h
Umm Al, Al Taweelah Abu Dhabi/ UAE through Borsig GMBH	<b>Demineralisation:</b> Mixed bed exchanger	3 x 80 m <sup>3</sup> /h
Umm Al, Al Taweelah Abu Dhabi/UAE through Borsig GmbH	<b>Demineralisation:</b> Mixed bed exchanger	160 m <sup>3</sup> /h
Neckarwerke AG Esslingen KW Altbach Block 5	Flue gas desulphurisation wastewater treatment plant Ash water treatment Condensate polishing plant Demineralisation plant Cooling tower make-up water (RPS with sludge-dewatering)	15 m <sup>3</sup> /h 100 m <sup>3</sup> /h 2 x 600 m <sup>3</sup> /h 2 x 35 m <sup>3</sup> /h 2 x 600 m <sup>3</sup> /h
Badenwerk AG Karlsruhe/Germany RDK Block 7	<b>Treatment of wastewater resulting from flue gas desulphurisation:</b> Flue gas desulphurisation wastewater treatment plant Process water treatment	14 m <sup>3</sup> /h 50 m <sup>3</sup> /h
EVS AG Stuttgart KW Heilbronn Germany	Flue gas desulphurisation wastewater treatment plant (85) Condensate polishing plant Demineralisation Plant (84/85) Ash water treatment Cooling tower make-up water (RPS with sludge-dewatering)	60 m <sup>3</sup> /h 2 x 750 m <sup>3</sup> /h 2 x 100 m <sup>3</sup> /h 60 – 120 m <sup>3</sup> /h 2 x 1,000 m <sup>3</sup> /h
HEW Hamburg KW Tiefstack Germany	<b>Ash transport water-treatment:</b> Flocculation with FLOCOPAC-CL	60 m <sup>3</sup> /h
GKM Mannheim Block 7 Neckarau Germany	Demineralisation Condensate polishing (Fluidised bed ion exchanger)	2 x 100 m <sup>3</sup> /h 2 x 750 m <sup>3</sup> /h

Client	Plant Type	Capacity
Gemeinschaftskern- kraftwerk Neckar GmbH Neckarwestheim Germany	<b>Demineralisation:</b>  Continuously operating SERVO-Kontimat consisting of cation- and anion exchangers, parallel regeneration in separate columns	70 m <sup>3</sup> /h
MVA Geissellullach/V  through GfA GmbH	<b>Treatment of wastewater resulting from a sewage incineration plant:</b> Flocculation, precipitation, lamellar clarifier, sludge filtration <b>Particularities:</b> Wastewater containing NOX and organic sulphuric compounds	15 m <sup>3</sup> /h
Northern Power Station through ETSA Port Augusta/Australia	<b>Condensate polishing:</b> Externally regenerated mixed bed exchangers	2 x 750 m <sup>3</sup> /h
Kali-Chemie AG Heilbronn/ Germany	Demineralisation	85 m <sup>3</sup> /h
NEWAG + VKG Wien Dürnrohr/Austria	<b>Ash transport water-treatment:</b> Flocculator, RP thickener, filtration	100 m <sup>3</sup> /h
VEW Dortmund KW Westfalen B Germany	<b>Filter backwash wastewater treatment:</b> Flocculation with FLOCOPAC-CL	18 m <sup>3</sup> /h
Badenwerk AG Karlsruhe Rheinhafen Dampfkraftwerk	<b>Condensate polishing</b>	2 x 540 m <sup>3</sup> /h
HEW Hamburg/Germany - KW Karoline 1984 - KW Tiefstack 1983 - KW Harburg 1983 - KW Hafen 1983	<b>Filter backwash wastewater treatment</b> Filter backwash wastewater treatment plant Flocculation with FLOCOPAC-CL	27.5 m <sup>3</sup> /h 15 m <sup>3</sup> /h 40 m <sup>3</sup> /h 25 m <sup>3</sup> /h
Hoechst AG Frankfurt/M. Germany	Demineralisation	380 m <sup>3</sup> /h
Berliner Entwässerungswerke Berlin/ Germany	Demineralisation	2 x 70 m <sup>3</sup> /h
RWE Essen Dettingen/ Germany	<b>Condensate polishing</b>	270 m <sup>3</sup> /h
Saarbergwerke Saarbrücken KW Bexbach/ Germany	<b>Cooling tower make-up water treatment:</b> FLOCOMAT-T and sludge-dewatering	1 x 2,000 m <sup>3</sup> /h
BKB Helmstedt KW Buschhaus/ Germany	<b>Cooling tower make-up water treatment:</b> Quick reactor FLOCOPULS-S	3 x 333 m <sup>3</sup> /h 2 x 500 m <sup>3</sup> /h
KWU Offenbach Kraftwerk Daura/Iraq	Preliminary treatment Demineralisation (reverse osmosis)	2 x 25 m <sup>3</sup> /h
Saarbergwerke Saarbrücken Völklingen/ Germany	<b>Cooling tower make-up water treatment:</b> Cooling tower make-up water (FLOCOPULS-S) Condensate polishing plant Demineralisation plant	800 m <sup>3</sup> /h  2 x 230 m <sup>3</sup> /h 2 x 25 m <sup>3</sup> /h



Client	Plant Type	Capacity
GKM Mannheim Neckarau/ Germany Block 7	<b>Make-up water treatment:</b> Make-up water treatment RPS Reverse-osmosis ECI process O <sub>2</sub> elimination Demineralisation plant Condensate polishing plant	290 m <sup>3</sup> /h 210 m <sup>3</sup> /h 220 m <sup>3</sup> /h 220 m <sup>3</sup> /h 200 m <sup>3</sup> /h 1,200 m <sup>3</sup> /h
SEVC-Melbourne Melbourne/Australia	<b>Condensate polishing:</b> Externally regenerated mixed bed exchangers	3 x 522.5 m <sup>3</sup> /h
Endessa Puentes/Spain	<b>Treatment of slake water:</b> Flocculation, sedimentation, lamellar clarifier	2 x 400 m <sup>3</sup> /h
Degussa Rheinfelden Rheinfelden/ Germany	Demineralisation (Liftbed)	2 x 60 m <sup>3</sup> /h
STEAG-RWE Essen Voerde/Germany	<b>Cooling tower make-up water treatment:</b> (RPS)	3 x 1,350 m <sup>3</sup> /h
RWE Essen KW Dettingen Dettingen/Main/Germany	Condensate polishing (Fluidised bed ion exchanger)	2 x 70 m <sup>3</sup> /h
Coutinho, Caro & Co Indonesia	Demineralisation (Fluidised bed ion exchanger)	2 x 220 m <sup>3</sup> /h
Bayernwerk AG München KW Schwandorf Germany	<b>Filter backwash wastewater treatment:</b> FLOCOPAC-CL and sludge dewatering	130 m <sup>3</sup> /h
EW Mark Hagen KW Elverlingsen Elverlingsen/Germany	Demineralisation (Fluidised bed ion exchanger)	2 x 25 m <sup>3</sup> /h
BfA Bundesversicherungsanstalt Berlin/Germany	Demineralisation (Fluidised bed ion exchanger)	2 x 25 m <sup>3</sup> /h
Krauss Maffei München München/Germany	Demineralisation (Fluidised bed ion exchanger)	2 x 15 m <sup>3</sup> /h
Saabergwerke Weiher/Germany	<b>Condensate polishing (Cat + MB)</b>	400 m <sup>3</sup> /h
KWU- Contract Cadefe/Venezuela	<b>Condensate polishing (Cat + MB)</b>	2 x 400 m <sup>3</sup> /h
Esso Chemie Köln/Germany	<b>Condensate polishing (Cat + MB)</b>	2 x 155 m <sup>3</sup> /h
Sadtwerke Mainz Mainz/Germany	<b>Condensate polishing (MB)</b>	400 m <sup>3</sup> /h
RWE- Essen KW Neurath/Germany	<b>Condensate polishing (MB)</b>	1,800 m <sup>3</sup> /h
Gemeinschaftskraftwerk Weser GmbH KW Veltheim/Germany	<b>AMA- Cartridge filter unit</b>	2 x 350 m <sup>3</sup> /h
RWE- Essen KW Neurath/Germany	<b>AMA- Cartridge filter unit</b>	3 x 750 m <sup>3</sup> /h
Schering AG KW Charlottenburg/Germany	<b>Condensate polishing (MB)</b>	15 m <sup>3</sup> /h
GKW KW Veltheim/Germany	<b>Condensate polishing (MB)</b>	315 m <sup>3</sup> /h

Client	Plant Type	Capacity
RWE- Essen KW Weisweiler/Germany	<b>Condensate polishing (MB)</b>	3 x 1,200 m <sup>3</sup> /h 3 x 1,400 m <sup>3</sup> /h
VEW Dortmund Lingen/Germany	<b>Condensate polishing (2 Cat + 1 MB)</b>	2 x 250 m <sup>3</sup> /h 1 x 500 m <sup>3</sup> /h
RWE- Essen KW Weisweiler/Germany	<b>AMA- Cartridge filter unit</b>	6 x 600 m <sup>3</sup> /h
GKM Mannheim/Germany	<b>AMA- Cartridge filter unit</b>	300 m <sup>3</sup> /h
Firma Praeg KW Borken/Germany	<b>AMA- Pre coat filter unit</b>	200 m <sup>3</sup> /h
Firma Praeg KW Staudinger/Germany	<b>AMA- Pre coat filter unit</b>	2 x 400 m <sup>3</sup> /h
Firma Dynamit Nobel Werk Lülisdorf/Germany	<b>AMA- Pre coat filter unit</b>	50 m <sup>3</sup> /h
Firma KWU, Erlangen KKW Vorssele/Netherlands	<b>AMA- Pre coat filter unit (radioactive water)</b>	40 m <sup>3</sup> /h
RWE- Essen KW Niederaussem/Germany	<b>AMA- Cartridge filter unit</b>	2 x 720 m <sup>3</sup> /h
GKM Mannheim Mannheim, Block 5 Germany	<b>Condensate polishing (MB)</b>	400 m <sup>3</sup> /h
NKW KW Emden/Germany	<b>Condensate polishing (Cat + MB)</b>	2 x 500 m <sup>3</sup> /h
RWE- Essen KW Niederaussem/Germany	<b>Condensate polishing (MB)</b>	1,200 m <sup>3</sup> /h
VEW KKW Lingen Germany	<b>Condensate polishing (MB)</b>	500 m <sup>3</sup> /h
RWE- Essen KW Weisweiler/Germany	<b>Condensate polishing (MB)</b>	3 x 1,200 m <sup>3</sup> /h
NWK Wilhelmshaven/Germany	<b>Condensate polishing (MB)</b>	2 x 800 m <sup>3</sup> /h
Stewaeg for Fernheizkraftwerk Graz	<b>AMA- Cartridge filter unit</b>	70 m <sup>3</sup> /h
RWE- Essen KW Neurath/Germany	<b>Condensate polishing (MB, externally regenerated )</b>	4 x 3,000 m <sup>3</sup> /h
Stadtwerke Frankfurt/ M. Germany	<b>Condensate polishing</b>	220 m <sup>3</sup> /h
Hamburgische Elektrizitätswerke KW Tiefstack/Germany	<b>Condensate polishing</b>	15 m <sup>3</sup> /h
Hamburgische Elektrizitätswerke KW Carolinenstrasse/Germany	<b>Condensate polishing</b>	80 m <sup>3</sup> /h
Norddeutsche Papierwerke GmbH Düsseldorf- Reisholz/Germany	<b>Condensate polishing</b>	100 m <sup>3</sup> /h

<b>Client</b>	<b>Plant Type</b>	<b>Capacity</b>
Rheinische AG f. Braunkohlenbergbau KW Fortuna, Köln Germany	<b>Condensate polishing</b>	720 m <sup>3</sup> /h
RWE- Essen KW Niederaussem I/Germany	<b>Condensate polishing</b>	360 m <sup>3</sup> /h
RWE- Essen KW Niederaussem II/Germany	<b>Condensate polishing</b>	360 m <sup>3</sup> /h
Preußische Elektrizitäts- AG KW Borken, Hannover/Germany	<b>Condensate polishing</b>	10 m <sup>3</sup> /h
Preußische Elektrizitäts- AG KW Heyden, Hannover/Germany	<b>Condensate polishing</b>	260 m <sup>3</sup> /h
Preußische Elektrizitäts- AG KW Wölfersheim, Hannover Germany	<b>Condensate polishing</b>	140 m <sup>3</sup> /h
Chemische Werke Hüls Marl Germany	<b>Condensate polishing</b>	150 m <sup>3</sup> /h
Bergische Elektrizitätsversorgung KW Elberfeld/Germany	<b>Condensate polishing</b>	216 m <sup>3</sup> /h
Bewag KW Moabit/Germany	<b>Condensate polishing</b>	100 m <sup>3</sup> /h
Bewag KW Charlottenburg/Germany	<b>Condensate polishing</b>	120 m <sup>3</sup> /h
Bewag KW Steglitz/Germany	<b>Condensate polishing</b>	40 m <sup>3</sup> /h
Bewag KW Spandau/Germany	<b>Condensate polishing</b>	75 m <sup>3</sup> /h
Bewag KW Rudow/Germany	<b>Condensate polishing</b>	160 m <sup>3</sup> /h
Rheinpreußen KW Moers/Germany	<b>Condensate polishing</b>	210 m <sup>3</sup> /h
Sydosts Jaellands Elektrizitets Haslev, Denmark	<b>Condensate polishing</b>	270 m <sup>3</sup> /h
Gemeinschaftswerk Hattingen Germany	<b>Condensate polishing</b>	420 m <sup>3</sup> /h
Neckarwerke Esslingen KW Altbach/Germany	<b>Condensate polishing</b>	100 m <sup>3</sup> /h
Neckarwerke Esslingen KW Walheim/Germany	<b>Condensate polishing</b>	70 m <sup>3</sup> /h
Gemeinschaftskraftwerk Weser Veltheim/Germany	<b>Condensate polishing</b>	230 m <sup>3</sup> /h
Altenessener Berkwerke AG KW Emscher/Germany	<b>Condensate polishing</b>	270 m <sup>3</sup> /h

<b>Client</b>	<b>Plant Type</b>	<b>Capacity</b>
Carl Freudenberg KG Weinheim/Germany	<b>Condensate polishing</b>	100 m <sup>3</sup> /h
Saarbergwerke AG KW Weiher/Germany	<b>Condensate polishing</b>	460 m <sup>3</sup> /h
Rheinstahl Bergbau AG KW Marl/Germany	<b>Condensate polishing</b>	300 m <sup>3</sup> /h
Vereinigte Glanzstoff- Fabriken AG Werk Obernburg Germany	<b>Condensate polishing</b>	180 m <sup>3</sup> /h
Gruppenkraftwerk Herne Essen/Germany	<b>Condensate polishing</b>	680 m <sup>3</sup> /h
KW Siersdorf, Kohlscheid Germany	<b>Condensate polishing</b>	340 m <sup>3</sup> /h
VEW Dortmund/Germany	<b>Condensate polishing</b>	600 m <sup>3</sup> /h
Deutsche Linoleum- Werke AG Maximiliansau/Germany	<b>Condensate polishing</b>	40 m <sup>3</sup> /h
Papier und Zellstoff- Fabrik Teisnach/Germany	<b>Condensate polishing</b>	40 m <sup>3</sup> /h
Bayernwerk AG DKW Aschaffenburg/Germany	<b>Condensate polishing</b>	350 m <sup>3</sup> /h
Bayernwerk AG DKW Aschaffenburg/Germany	<b>Condensate polishing</b>	110 m <sup>3</sup> /h
Vereinigte Aluminium Werke AG Nabwerk, Schwandorf/Germany	<b>Condensate polishing</b>	80 m <sup>3</sup> /h
Stadtwerke München München/Germany	<b>Condensate polishing</b>	350 m <sup>3</sup> /h
HKS Helsinki KW Hanasaari/Finland	<b>Condensate polishing</b>	60 m <sup>3</sup> /h
Bergwerkgesellschaft Hibernia AG KW Datteln/Germany	<b>Condensate polishing</b>	150 m <sup>3</sup> /h
Stadtwerke Braunschweig KW Uferstrasse/Germany	<b>Condensate polishing</b>	200 m <sup>3</sup> /h
Großkraftwerk Mannheim AG KW Neckarau/Germany	<b>Condensate polishing</b>	840 m <sup>3</sup> /h
Kobenhavns Belysningsvasen Kopenhagen/Netherlands	<b>Condensate polishing</b>	800 m <sup>3</sup> /h
Nordwestdeutsche Kraftwerke AG KW Emden/Germany	<b>Condensate polishing</b>	300 m <sup>3</sup> /h
KW Badalona, Spain	<b>Condensate polishing</b>	320 m <sup>3</sup> /h
I/S Nordjyllands Elektricitetsforsyning KW Norresundby/Denmark	<b>Condensate polishing</b>	300 m <sup>3</sup> /h
Stadtwerke Neumünster/Germany	<b>Condensate polishing</b>	100 m <sup>3</sup> /h
Neckarwerke Esslingen DKW Walheim/Germany	<b>Condensate polishing</b>	150 m <sup>3</sup> /h

Client	Plant Type	Capacity
Stadtwerke Düsseldorf KW Lausward, Block D Germany	<b>Condensate polishing</b>	320 m <sup>3</sup> /h
Brauenschweigische Kohlen- Bergwerke KW Offleben/Germany	<b>Condensate polishing</b>	240 m <sup>3</sup> /h
RWE- Essen KW Niederaussem I/ 3 Germany	<b>Condensate polishing</b>	700 m <sup>3</sup> /h
Bewag KW Reuter/Germany	<b>Condensate polishing</b>	240 m <sup>3</sup> /h
Bewag KW Reuter/Germany	<b>Condensate polishing</b>	270 m <sup>3</sup> /h
VEW KW Westfalen/Germany	<b>Condensate polishing</b>	600 m <sup>3</sup> /h
RWE- Essen KW Niederaussem/Germany	<b>Condensate polishing</b>	700 m <sup>3</sup> /h

H+E ranks among the world's leading suppliers in the fields of: water & wastewater treatment, and energy efficiency. Based on its global presence, the **H+E GROUP** has completed projects in over 50 countries.



Tel: +44 1403 272772

[sales@he-water.co.uk](mailto:sales@he-water.co.uk)  
[www.he-water.co.uk](http://www.he-water.co.uk)